

PAPA Membership Meeting

November 4, 2019



Agenda

- ▶ Carnevil Recap
- ▶ Mattress Fundraiser Recap
- ▶ Crab Feed Preparation
- ▶ Fundraiser Plugs
- ▶ Fundraising Request Process
- ▶ Prep for Upcoming Events
 - ▶ MB Benefits Concert
 - ▶ Blossom Hill Music Festival
- ▶ HSC Report
- ▶ Area reports

Haunted House

The Results

\$6,000 to 7,000 Net Income

- \$2,900 in donations

< \$5,000 in Sales

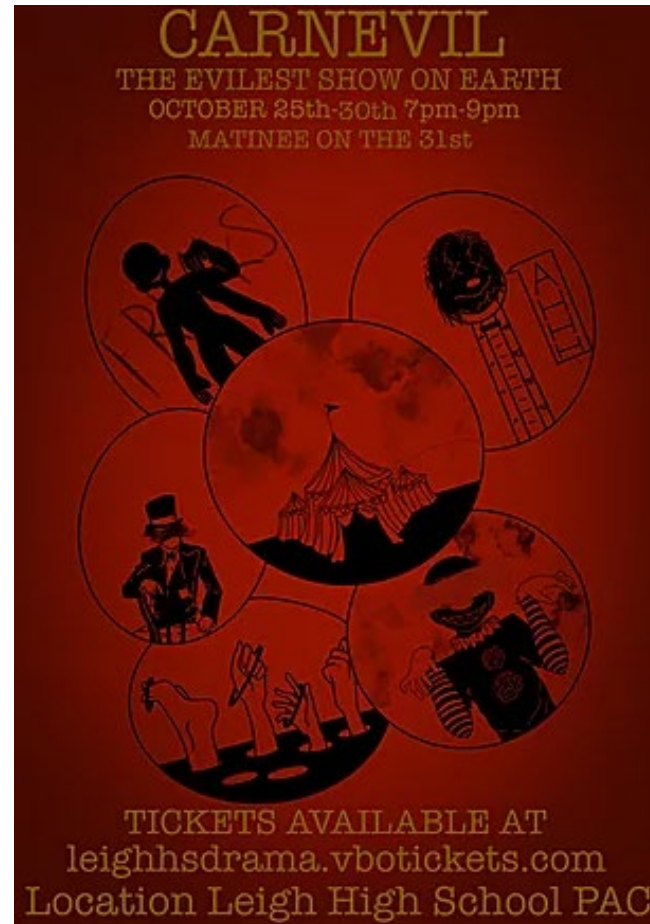
53 students in the cast

Large crew (20 to 30)

6 to 7 leaders

Auditions need to be better
advertised in the future

Get calendar solidified in May



Sweet Dreams Leigh

Sales

- ▶ Total earnings \$8,855
 - ▶ \$750 reward to students
 - ▶ \$8,105 to PAPA
 - ▶ ↓\$4,000 y/y
- ▶ Sold 50 beds this year (down 16 y/y)
 - ▶ Overall momentum and energy was down
 - ▶ Let's discuss how to get back on track in 2020
 - ▶ Date options: Sat, October 24th, Sun, November 1st

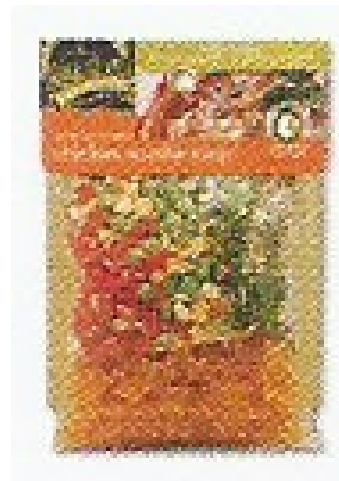


Fundraising Plugs

Wreaths, Frontier Soups, & Cheesecake



- ▶ Forms due 11/06
- ▶ Wreath distribution after Thanksgiving



- ▶ Forms due 12/02
- ▶ Soup distribution Mid-December



- ▶ Forms due 11/06
- ▶ Cake distribution after school on 11/20

Fundraising Plugs

Bake Sales

- ▶ Sunday, November 10th, 10AM to 4PM: Bake Sale @ Lunardi's to benefit Winter Percussion
- ▶ Bake Sales supporting Theater (all at Safeway 11am - 3pm)
 - ▶ Saturday, November 16th
 - ▶ Saturday, November 23rd
 - ▶ Saturday, December 7th
 - ▶ Saturday, December 14th

Crab Feed

February 8, 2020

- ▶ Ticket Sales: Early January
- ▶ We need to grow the team!
 - ▶ Purchasing
 - ▶ Volunteer Coordinator
 - ▶ Class Basket Coordinator
 - ▶ Publicity
 - ▶ Kitchen
 - ▶ Merchandise
 - ▶ Auction Donations
- ▶ Contact Information: papa_fundraising@leighpapa.org



Have a Fundraising Idea?

Form Submission

Let's hear from Sandra

Upcoming Events

Preparation

- ▶ MB Benefit Show
- ▶ Winter Concerts
- ▶ Blossom Hill Festival

Fall Events

▶ Theater

- ▶ She Kills Monsters: December 6, 7, 12-14
 - ▶ Tickets on sale November 15th
- ▶ Once Upon a Mattress Musical Auditions: Nov 19-20

▶ Music

- ▶ Dec 16- Winter Concert I - Jazz 1, Jazz 1, Solo & Ensemble
- ▶ Dec 17- Winter Concert II - Concert Choir, Concert Band, Symphonic Band, Wind Ensemble

▶ Marching Arts

- ▶ Winter Percussion and Winter Guard auditioning now!

Home and School Club Meeting

Sean, what is going on at Leigh?

- ▶ District created student advisory council
 - ▶ Mental Health and Vaping
- ▶ 150-200 parents at Junior/Senior College Night
 - ▶ More juniors are attending the college visits than before
- ▶ Activities Director would like parents to sign up to volunteer to help with clubs,
 - ▶ Parental help is needed in order to get these clubs off the ground. ii. Contact Mr. Roe directly if interested.

Team Lead Updates

- ▶ Operations - Mike Gammill
- ▶ Treasury - Gil Garcia
- ▶ Fundraising - Sandra Long
- ▶ Communications - Sonya Neal
- ▶ HSC - Sean Simonson
- ▶ Volunteers - Kristin Ellis
- ▶ Escript/Amazon - TBD
- ▶ See's Candy - Kerry Billner
- ▶ Rummage Sale - Susie Woodford
- ▶ Crab Feed - James Sawaya
- ▶ Choir Liaison - TBD
- ▶ Music Liaison - Rita Jaworski
- ▶ Theater Liaison - Lara Blom
- ▶ Marching Band - Diane Hoffstetter
- ▶ Winter Percussion - Todd Mendenhall
- ▶ Winter Guard - Kristi Annecone
- ▶ MB Food Crew - Darlene Weber
- ▶ MB Uniforms - Kristin Ellis

Next Meeting

- ▶ Monday, December 9th

Stay Connected

Keep up-to-date with what's happening with Leigh Performing Arts
~ Band, Theatre, Choir, Marching Arts, Performances and Fundraising ~

Bookmark the Leigh PAPA website

leighpapa.org

Fill out the New or Returning Student info form

leighpapa.org/student-info/

Join the Facebook group

www.facebook.com/lhspapa/

Follow us on Twitter

<https://twitter.com/LeighPAPA1>

Volunteer at Performing Arts events and Fundraisers

<http://leighpapa.ivolunteer.com/>